



SCOTTISHPOWER  
RENEWABLES

# East Anglia ONE North and East Anglia TWO Offshore Windfarms

## LVIA GIS Addendum

Appendix 11 Viewpoint 3: Figure 29.15  
AIS Update: Grove Road, near Pear  
Tree Farm

Applicants: East Anglia ONE North Limited and East Anglia TWO Limited

Document Reference: ExA.AS-4.D11.V1\_11

SPR Reference: EA1N\_EA2-DWF-ENV-REP-IBR-001074\_11

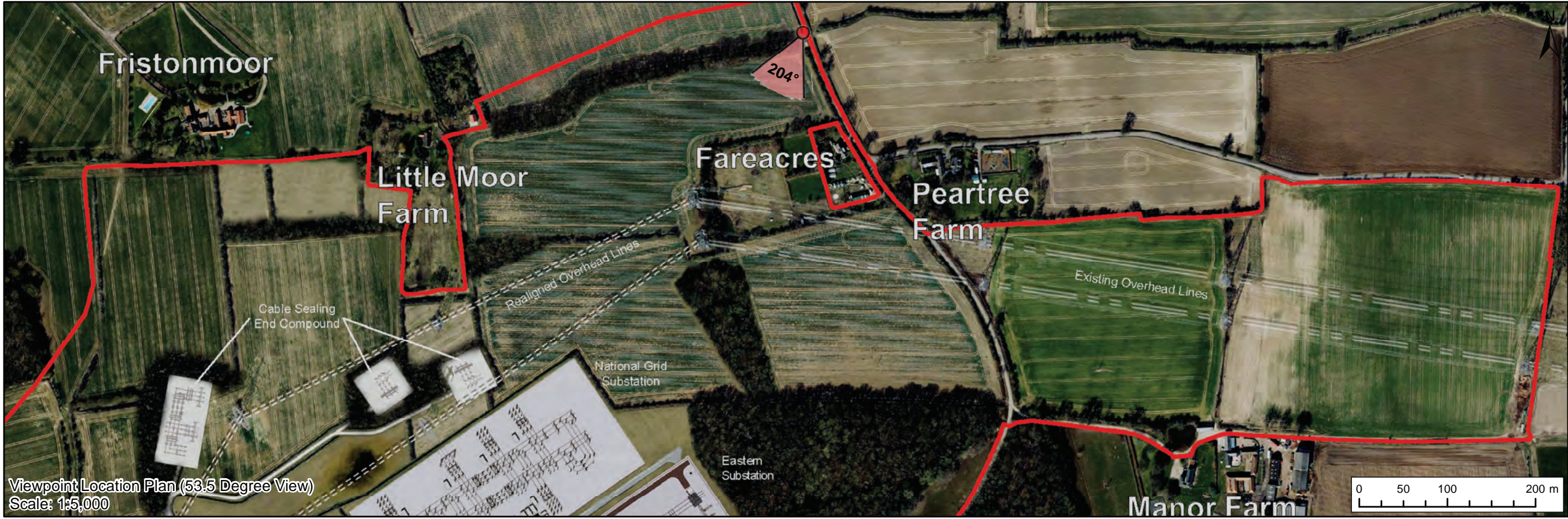
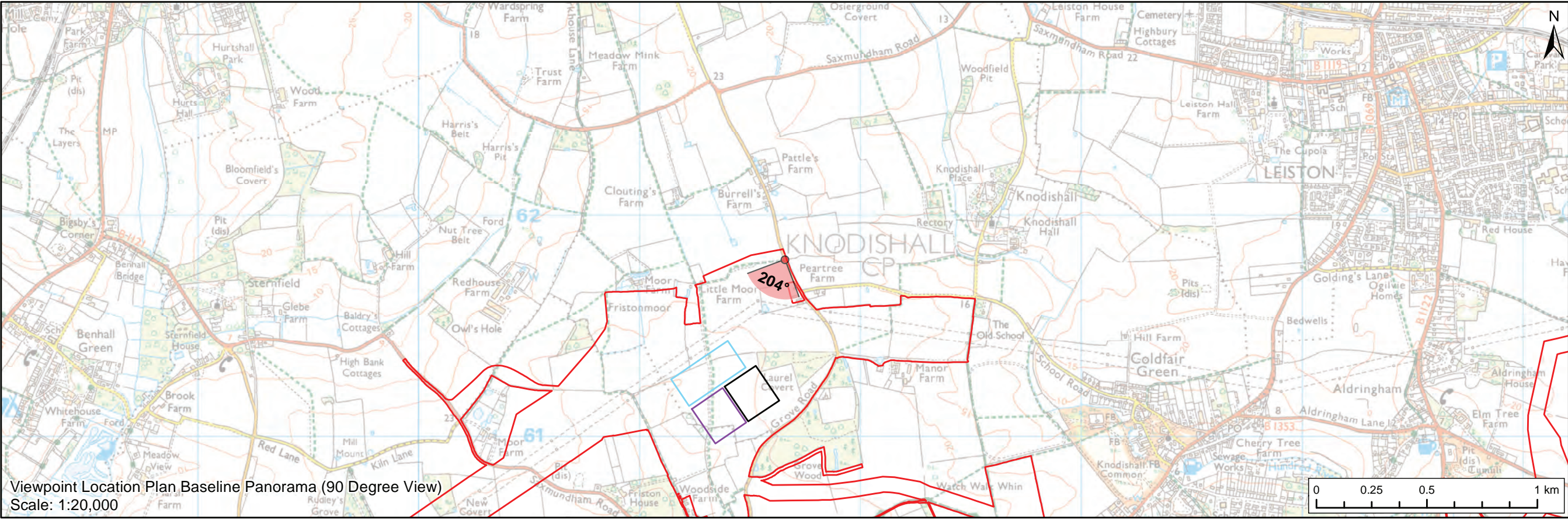
Date: 7<sup>th</sup> June 2021

Revision: Version 1

Author: Royal HaskoningDHV

**Applicable to East Anglia ONE North and East Anglia TWO**






**Legend**

- East Anglia ONE North and East Anglia TWO Onshore Development Area
- Western Substation (190m x 170m)
- Eastern Substation (190m x 170m)
- National Grid Substation

**Viewpoint:**

- 90 Degree Field of View Viewpoint
- 53.5 Degree Field of View Viewpoint

							East Anglia ONE North and East Anglia TWO Viewpoint 3: Grove Road, near Pear Tree Farm	(Figure 29.15-Update)		
				Prepared:	LA	Scale @ A3		Rev	1	Coordinate System: BNG Datum: OSGB36
	1	13/01/2021	LA	First Issue (OPEN)	Checked:	SM		Date	13/01/21	
	Rev	Date	By	Comment	Approved:	LT		Figure	29.15a	









Visual representation of 1st year of operational phase  
Photomontage of the proposed western substation and National Grid AIS substation

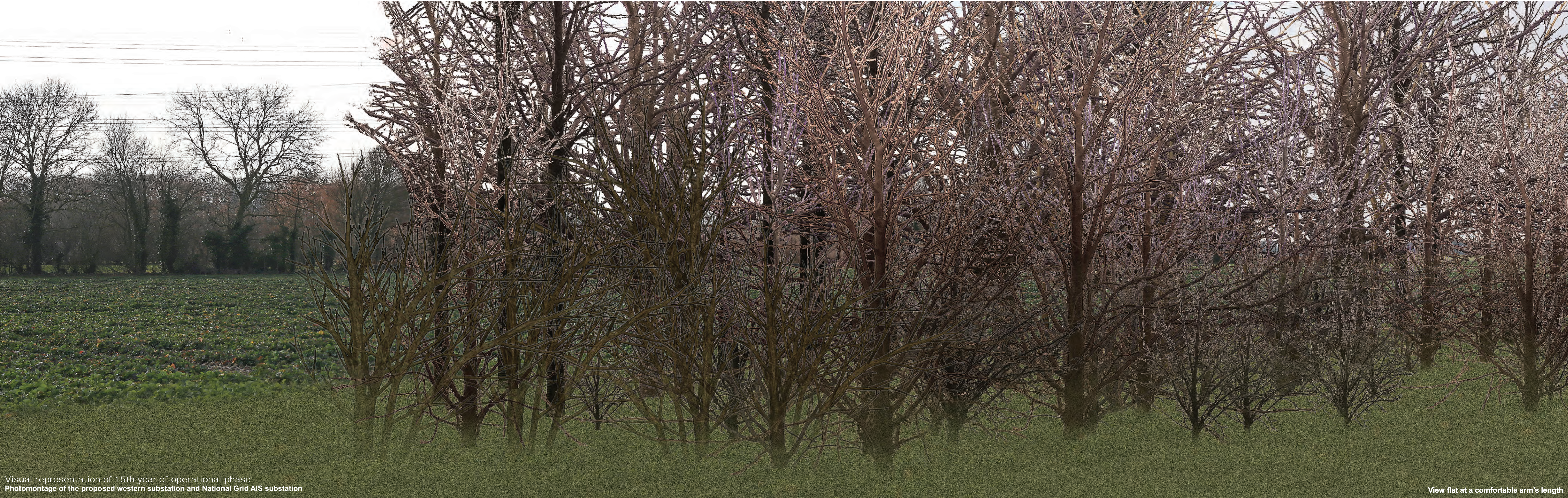
View flat at a comfortable arm's length

OS reference:	641657 E 261801 N	Horizontal field of view:	53.5° (planar projection)	Camera:	Canon EOS 5D Mark II
Eye level:	24 m AOD	Principal viewing distance:	812.5 mm	Lens:	50mm (Canon EF 50mm f/1.4)
Direction of view:	204°	Paper size:	841 x 297 mm (half A1)	Camera height:	1.5 m AGL
		Correct printed image size:	820 x 260 mm	Date and time:	22/02/2020, 10:22:33

Contains Ordnance Survey digital data © Crown copyright, All rights reserved 2020 Licence number 0100031673

Figure: 29.15b  
Viewpoint 3: Grove Road, near Pear Tree Farm





Visual representation of 15th year of operational phase  
Photomontage of the proposed western substation and National Grid AIS substation

View flat at a comfortable arm's length

OS reference:	641657 E 261801 N	Horizontal field of view:	53.5° (planar projection)	Camera:	Canon EOS 5D Mark II
Eye level:	24 m AOD	Principal viewing distance:	812.5 mm	Lens:	50mm (Canon EF 50mm f/1.4)
Direction of view:	204°	Paper size:	841 x 297 mm (half A1)	Camera height:	1.5 m AGL
		Correct printed image size:	820 x 260 mm	Date and time:	22/02/2020, 10:22:33

Contains Ordnance Survey digital data © Crown copyright, All rights reserved 2020 Licence number 0100031673

Figure: 29.15c  
Viewpoint 3: Grove Road, near Pear Tree Farm

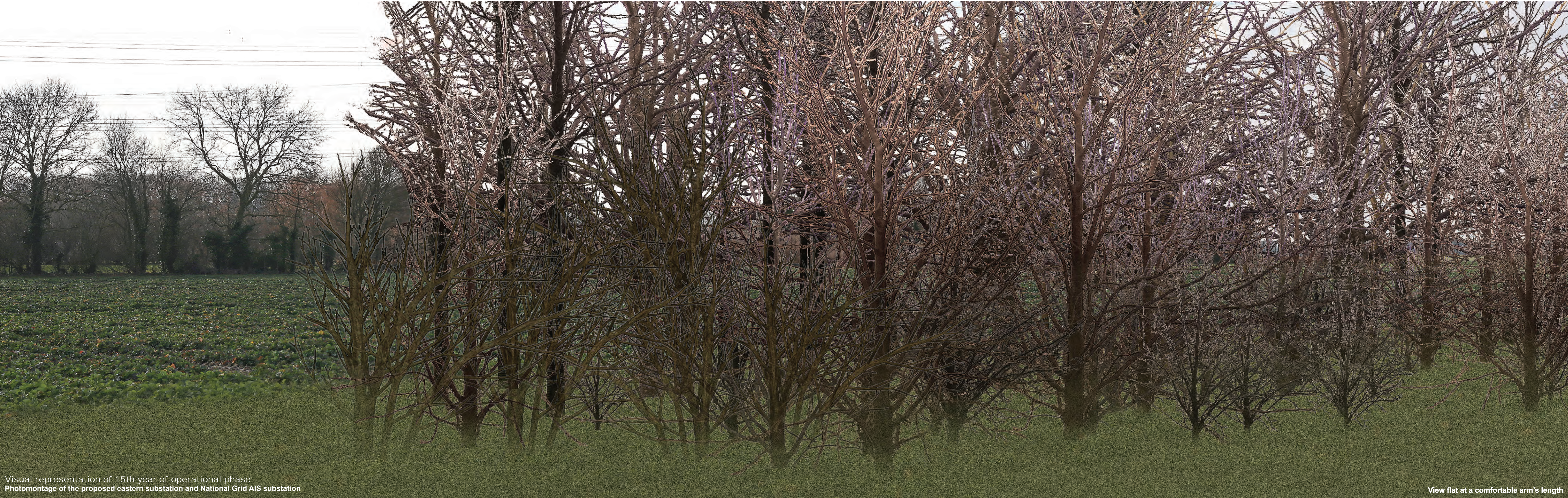




Visual representation of 1st year of operational phase  
Photomontage of the proposed eastern substation and National Grid AIS substation

View flat at a comfortable arm's length





Visual representation of 15th year of operational phase  
Photomontage of the proposed eastern substation and National Grid AIS substation

View flat at a comfortable arm's length

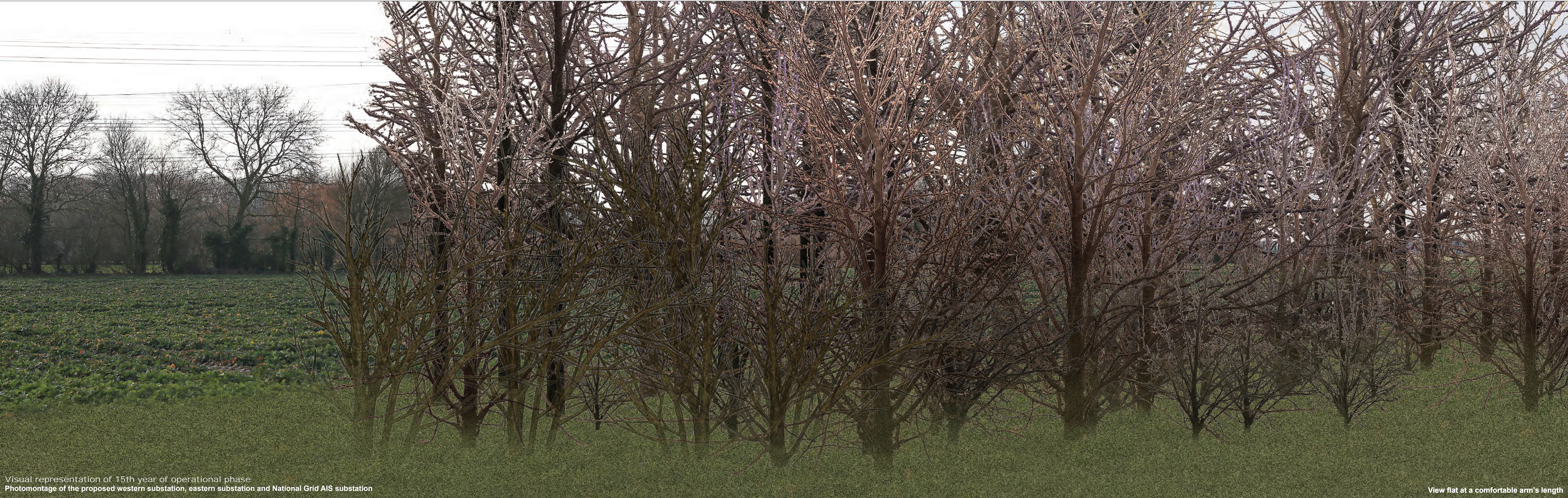




Visual representation of 1st year of operational phase  
Photomontage of the proposed western substation, eastern substation and National Grid AIS substation

View flat at a comfortable arm's length





Visual representation of 15th year of operational phase  
Photomontage of the proposed western substation, eastern substation and National Grid AIS substation

View flat at a comfortable arm's length

OS reference:	641657 E 261801 N	Horizontal field of view:	53.5° (planar projection)	Camera:	Canon EOS 5D Mark II
Eye level:	24 m AOD	Principal viewing distance:	812.5 mm	Lens:	50mm (Canon EF 50mm f/1.4)
Direction of view:	204°	Paper size:	841 x 297 mm (half A1)	Camera height:	1.5 m AGL
		Correct printed image size:	820 x 260 mm	Date and time:	22/02/2020, 10:22:33

Contains Ordnance Survey digital data © Crown copyright, All rights reserved 2020 Licence number 0100031673

Figure: 29.15e  
Viewpoint 3: Grove Road, near Pear Tree Farm